

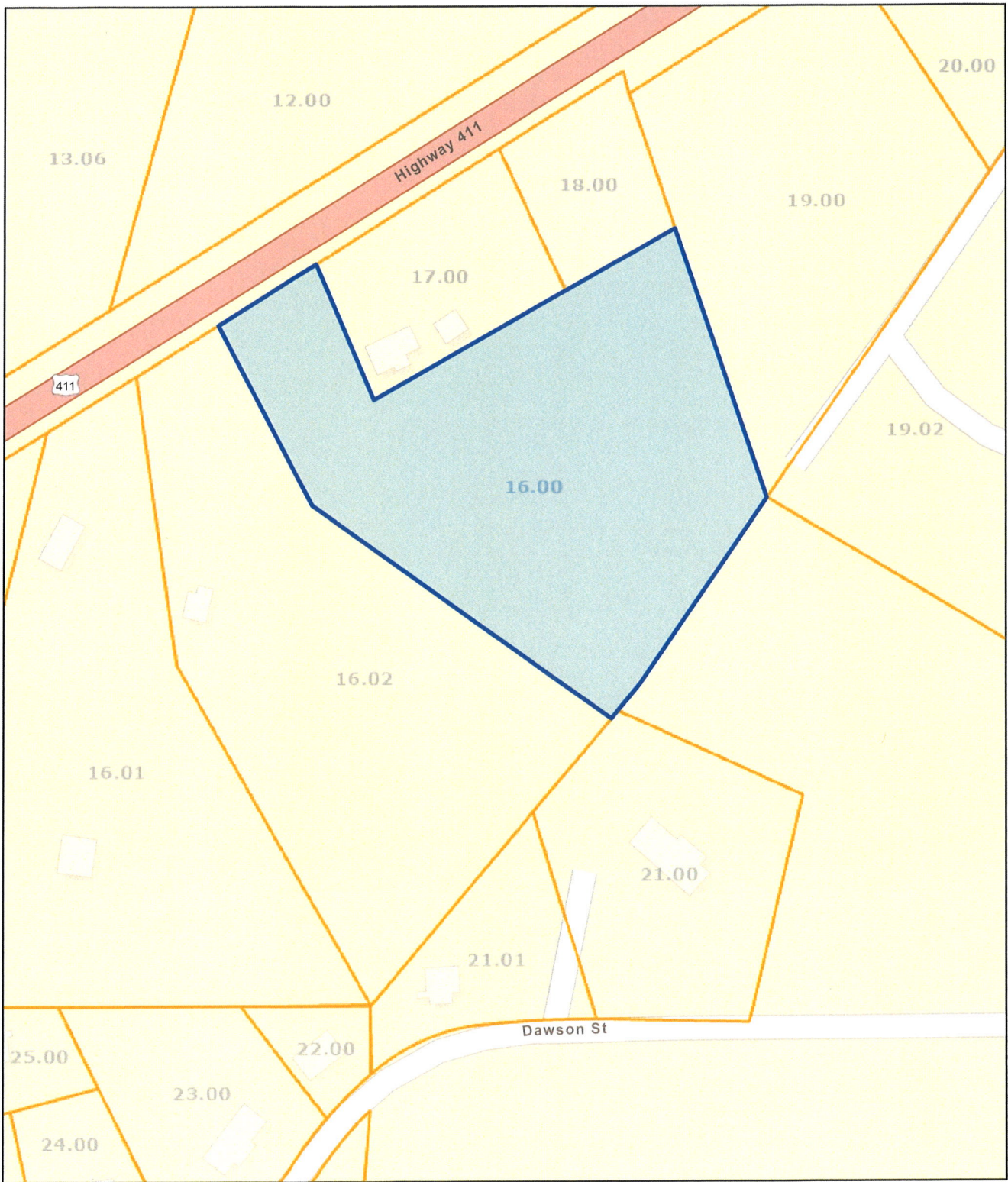
M E M O R A N D U M

To: Vonore Board of Zoning Appeals
From: Laura Smith, Planner
Date: February 2, 2023
Subject: February 7, 2023, Vonore Board of Zoning Appeals Agenda

AGENDA VONORE BOARD OF ZONING APPEALS Vonore Community Center Tuesday, February 7, 2023 6:00 p.m.

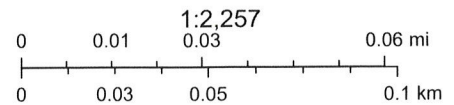
- I. Call to Order and Approval of the minutes of the January 3, 2023, meeting
- II. Variance Request for gravel interior roads for proposed 62 tent and RV sites, RV park, Chris Brown, Harold Brown Design, LLC, Property owners, Adam and Terri Moore, Hwy. 411, Tax Map 028, Parcel 016 and 016.02, C-3, Highway Business District, approximately 8.76 acres (combined);
- III. Other Business
- IV. Adjournment

Monroe County - Parcel: 028 016.00



Date: February 2, 2023

County: Monroe
Owner: MACK KENNETH RAYMOND ETUX
Address: HWY 411
Parcel Number: 028 016.00
Deeded Acreage: 4.38
Calculated Acreage: 0
Date of TDOT Imagery: 2019
Date of Vexcel Imagery: 2021



State of Tennessee, Comptroller of the Treasury, Office of Local Government (OLG), Esri Community Maps Contributors, State of North Carolina DOT, Tennessee STS GIS, © OpenStreetMap, Microsoft, Esri, HERE, Garmin, SafeGraph, GeoTechnologies, Inc, METI/NASA, USGS, EPA, NPS, US Census Bureau, USDA

The property lines are compiled from information maintained by your local county Assessor's office but are not conclusive evidence of property ownership in any court of law.



DESIGNED: CRB
 DRAWN: CRB
 CHECKED: SDV

NO. DATE

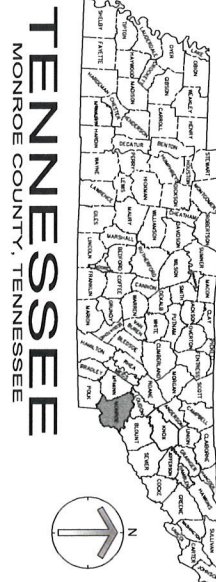
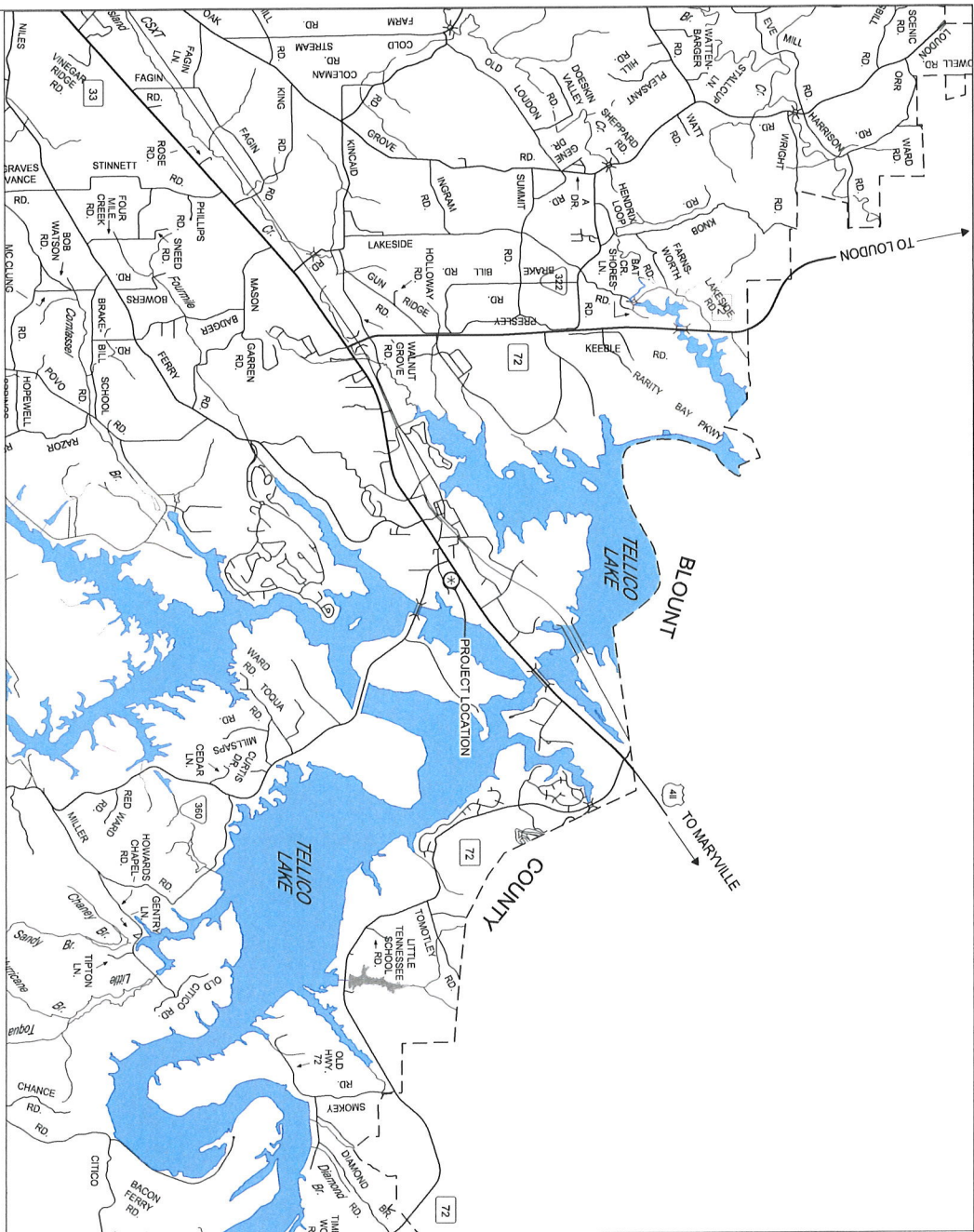
REVISION

APPR. DATE

SCALE
 NTS
 DATE
 DECEMBER, 2022

PROJECT #:
 VICINITY MAP &
 DRAWING INDEX
G2.0

VONOORE, TENNESSEE
 NTS



TENNESSEE
 MONROE COUNTY, TENNESSEE

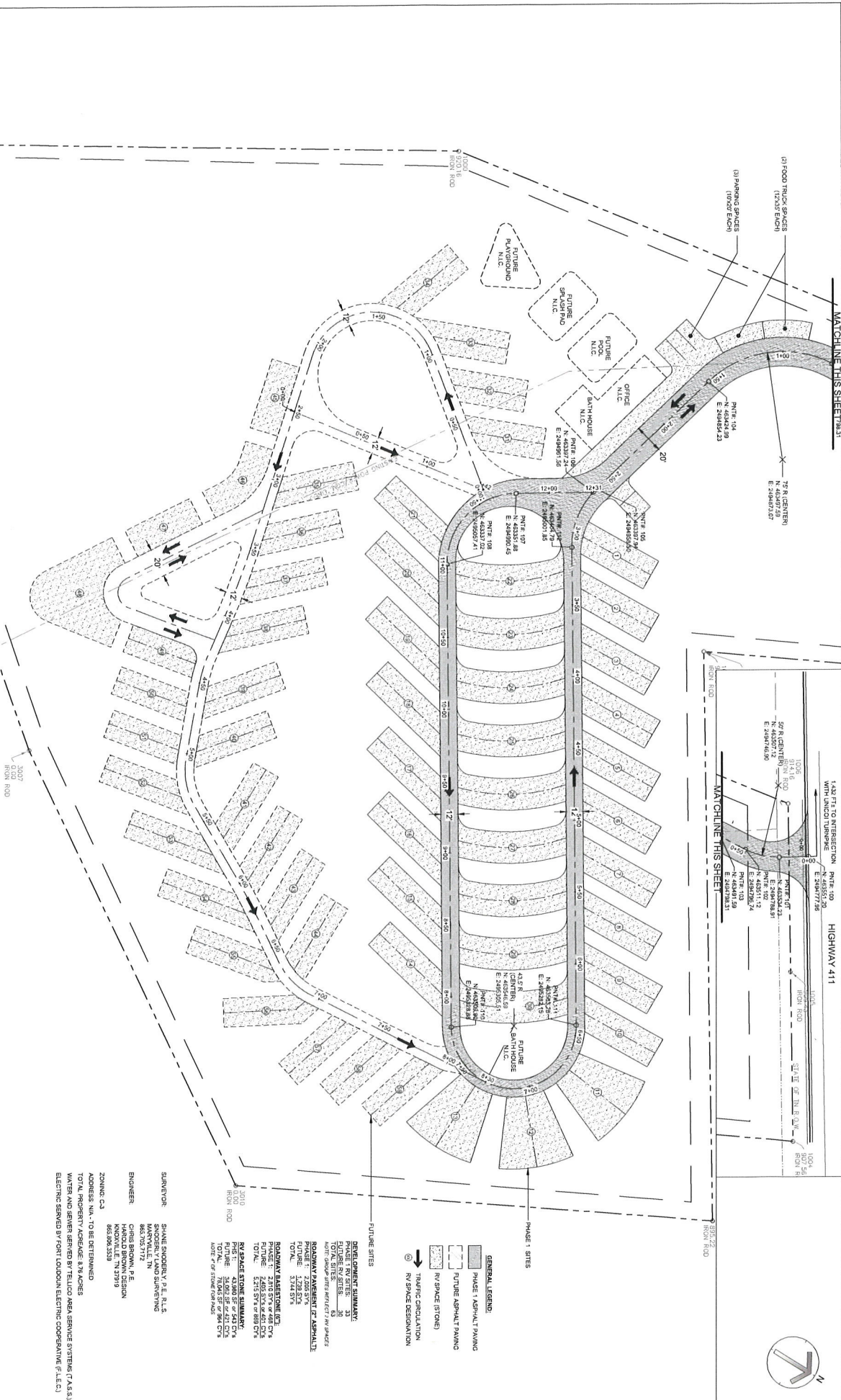
PRELIMINARY - NOT FOR CONSTRUCTION

DRAWING INDEX

SHEET NO.	DESCRIPTION
G1.0	COVER SHEET
G1.1	VICINITY MAP & DRAWING INDEX
C1.0	SITE PLAN (SHEET 1 of 3)
C1.1	SITE PLAN (SHEET 2 of 3)
C1.2	SITE PLAN (SHEET 3 of 3)
C2.0	GRADING & DRAINAGE PLAN
C2.1	PHS 1 GRADING & DRAINAGE PLAN
C2.2	PHS 2 GRADING & DRAINAGE PLAN
C2.3	PHS 3 GRADING & DRAINAGE PLAN
C3.0	OPERABILITY PLAN
C4.1	PHS 1 UTILITY PLAN
C4.2	FUTURE UTILITY PLAN
C4.3	PHS 1 SEWER PROFILES
C4.4	FUTURE SEWER PROFILES
C5.0	PHS 1 EROSION CONTROL PLAN
C5.1	PHS 2 EROSION CONTROL PLAN
C5.2	PHS 3 EROSION CONTROL PLAN
C5.3	EROSION CONTROL DETAILS
C5.4	SWPPP (1 OF 4)
C5.5	SWPPP (2 OF 4)
C5.6	SWPPP (3 OF 4)
C5.7	SWPPP (4 OF 4)
D1.0	CONSTRUCTION DETAILS
D2.0	UTILITY DETAILS
D3.0	UTILITY DETAILS
D4.0	UTILITY DETAILS
D5.0	LANDSCAPE PLAN & DETAILS
L1.0	LANDSCAPE PLAN & DETAILS

CONTACT INFORMATION

OWNER:	ADM & WIKI MOORE
ENGINEER:	CHRIS BROWN, P.E. HAROLD BROWN DESIGN 865.395.3533
SURVEYOR:	SHANE SNODERLY, P.E., R.L.S. SNODERLY LAND SURVEYING
WATER & SEWER:	TELICO AREA SERVICE SYSTEMS (TASS) DON SCHULTZ
ELECTRIC:	FRONT LOUDON ELECTRIC COOPERATIVE (FLEC) SHANE SCHAEFER 877-TELECOM EXT: 111





DESIGNED CRB
DRAWN: CRB
CHECKED: SDV

NO.	DATE

REVISION

APPR.

SCALE
1" = 20'

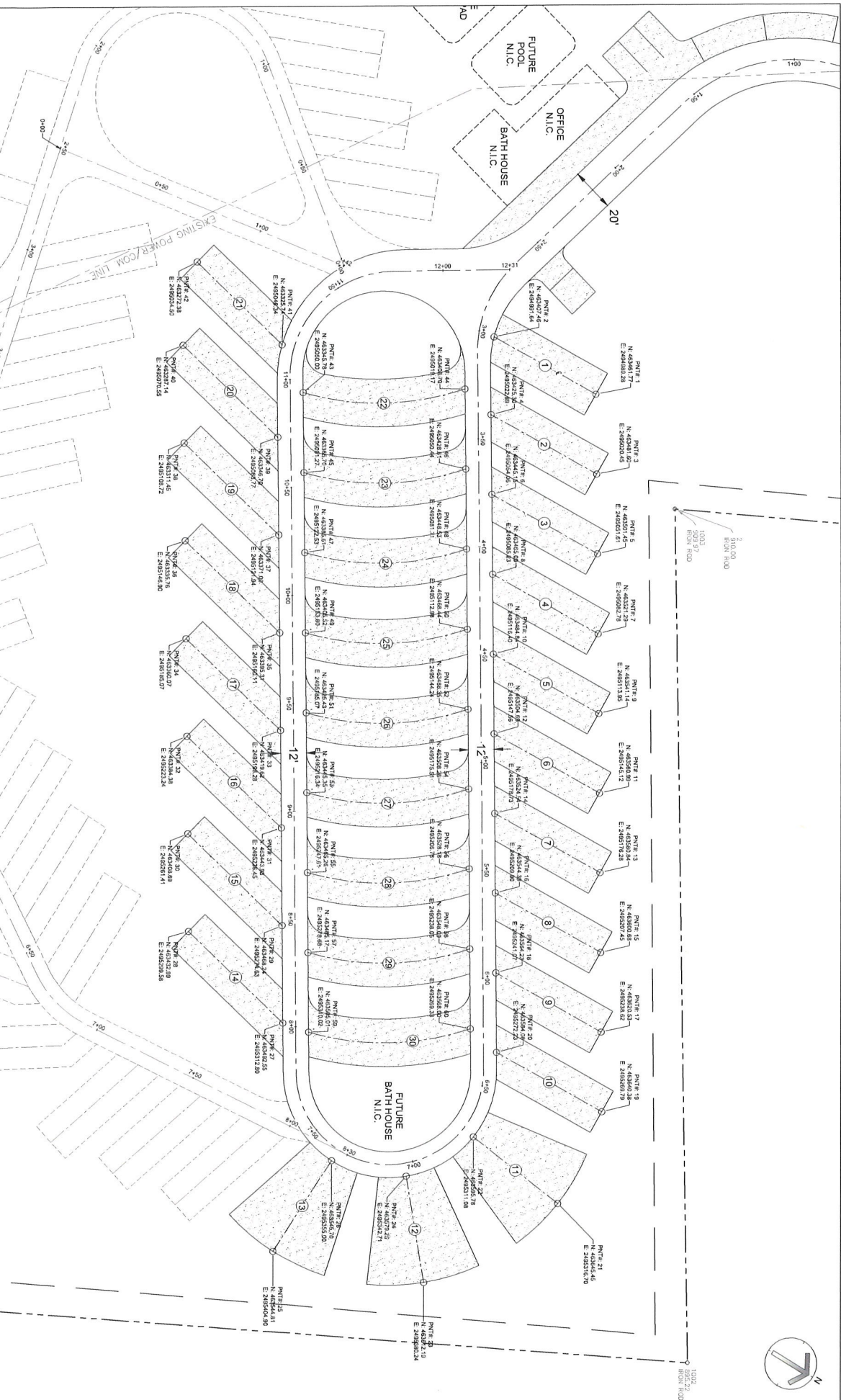
DATE
DECEMBER, 2022



HIGHWAY 411 RV PARK
YONORE, TN

PROJECT #	SITE PLAN
22021.00	(SHEET 2 of 3)

C1.1



PRELIMINARY - NOT FOR CONSTRUCTION

