

MEMORANDUM

To: Vonore Municipal/Regional Planning Commission
From: Laura Smith, Planner
Date: December 27, 2022
Subject: January 3, 2023, Vonore Planning Commission Agenda

AGENDA
VONORE MUNICIPAL/REGIONAL PLANNING COMMISSION
Vonore Community Center
Tuesday, January 3, 2023
Immediately following BZA

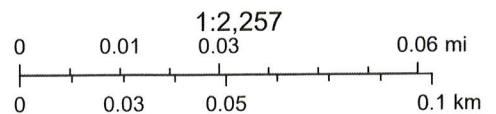
- I. Call to Order and Approval of the minutes of the November 1, 2022 meeting
 - A. Site Plan, Overhill Gardens, Avi Askey, 1230 Hwy. 411, Tax Map 038B, Grp. A, Parcel 015.00, C-3, Highway Business District, approx. 1 acre;
- II. Other Business
- III. Adjournment

Monroe County - Parcel: 038B A 015.00



Date: December 28, 2022

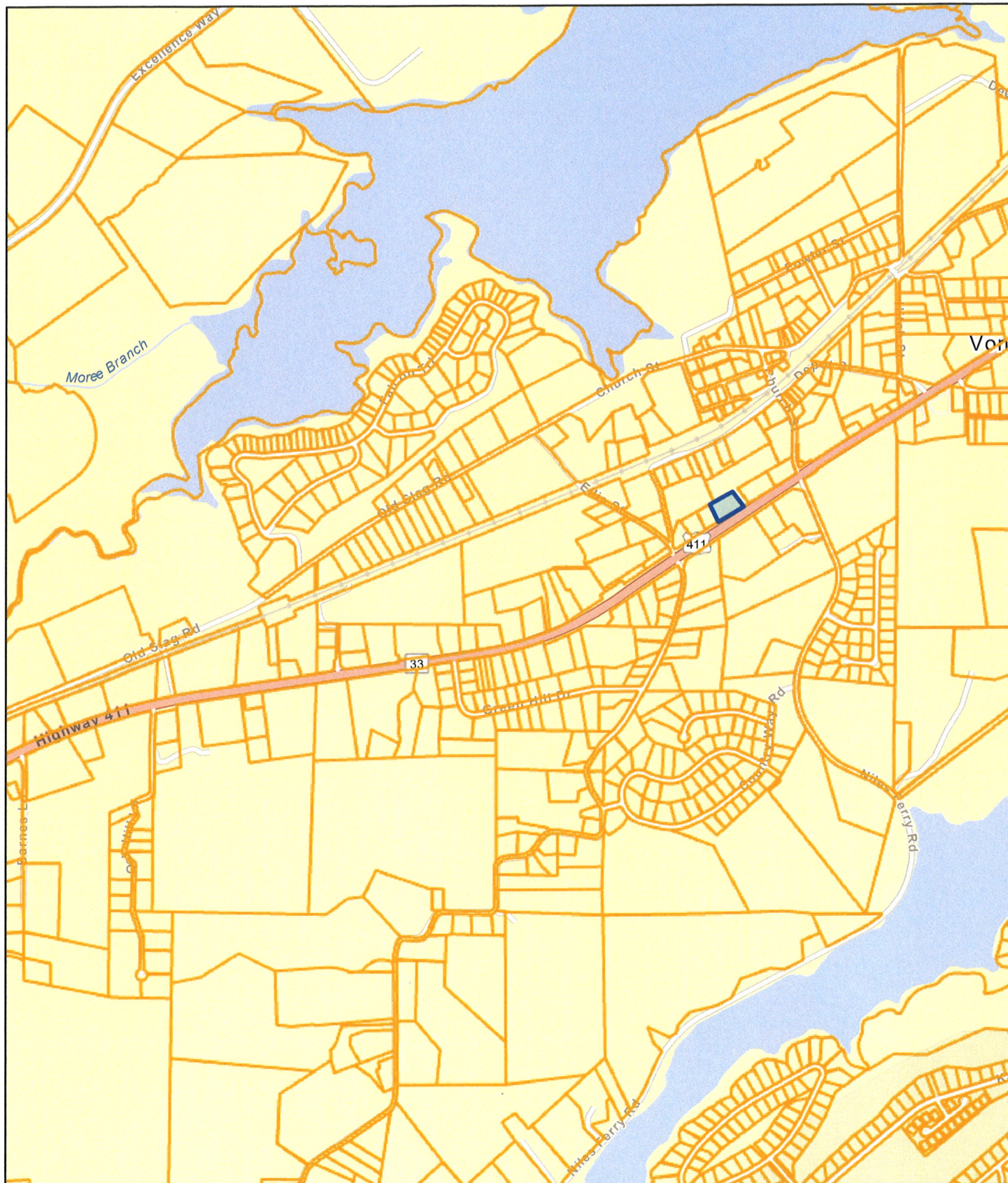
County: Monroe
Owner: ISBILL FRANK E
Address: HWY 411 1230
Parcel Number: 038B A 015.00
Deeded Acreage: 0.95
Calculated Acreage: 0



State of Tennessee, Comptroller of the Treasury, Office of Local Government (OLG), Esri Community Maps Contributors, State of North Carolina DOT, Tennessee STS GIS, © OpenStreetMap, Microsoft, Esri, HERE, Garmin, SafeGraph, GeoTechnologies, Inc, METI/NASA, USGS, EPA, NPS, US Census Bureau, USDA

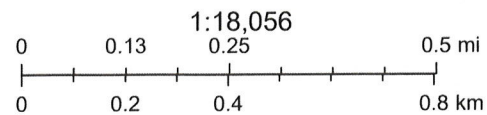
The property lines are compiled from information maintained by your local

Monroe County - Parcel: 038B A 015.00



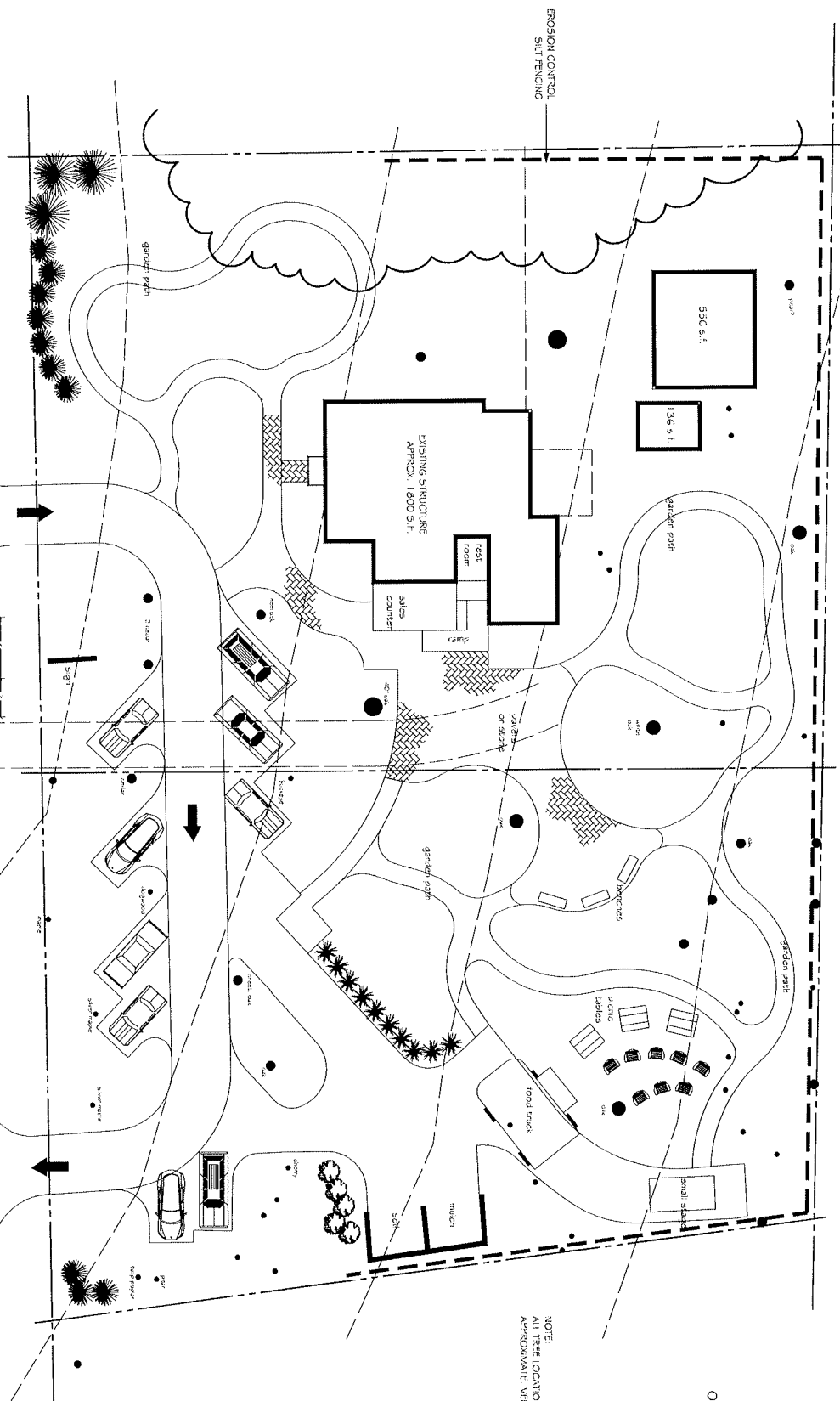
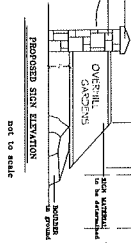
Date: December 28, 2022

County: Monroe
Owner: ISBILL FRANK E
Address: HWY 411 1230
Parcel Number: 038B A 015.00
Deeded Acreage: 0.95
Calculated Acreage: 0



Esri Community Maps Contributors, State of North Carolina DOT, Esri, HERE, Garmin, SafeGraph, GeoTechnologies, Inc, METI/NASA, USGS, EPA, NPS, US Census Bureau, USDA, State of Tennessee, Comptroller of the Treasury, Office of Local Government (OLG)

The property lines are compiled from information maintained by your local



NOTE:
ALL TREE LOCATIONS ARE
APPROXIMATE. VERIFY IN FIELD.



Design Oct. 27, 2022

OVERHILL GARDENS

1230 HWY 411 - VONORE, TN 37885

NOT FOR CONSTRUCTION

GARRY L. HENNINGER, AIA
9635-639-0031
OCTOBER 27, 2022

