

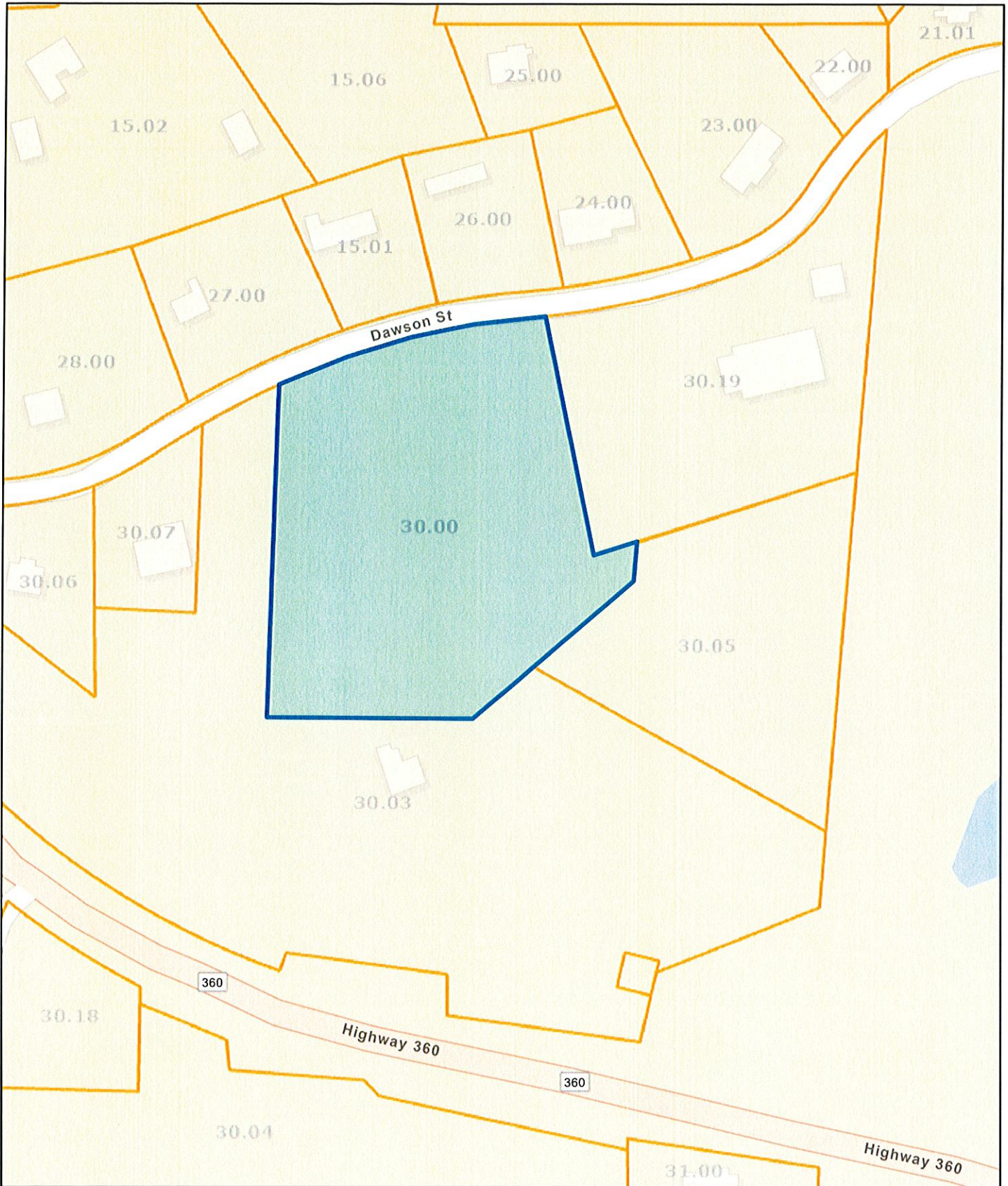
M E M O R A N D U M

To: Vonore Municipal/Regional Planning Commission
From: Laura Smith, Planner
Date: August 30, 2022
Subject: September 6, 2022, Vonore Planning Commission Agenda

AGENDA
VONORE MUNICIPAL/REGIONAL PLANNING COMMISSION
Vonore Community Center
Tuesday, September 6, 2022
Immediately following BZA

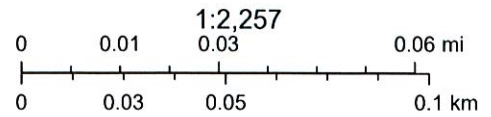
- I. Call to Order and Approval of the minutes of the August 2, 2022 meeting
 - A. Preliminary Plat, PUD, Lake Forest Development, LLC, 48-lots, duplexes, Applicant, Robert Heimann, Dawson St. and Hwy. 360, Monroe County Tax Map 028, Parcels 030.00, 030.03, and 030.05, R-2, High Density Residential District, approx. 12.14 acres;
- II. Other Business
- III. Adjournment

Monroe County - Parcel: 028 030.00



Date: August 31, 2022

County: Monroe
Owner: LAKE FOREST DEVELOPMENT LLC
Address: DAWSON ST
Parcel Number: 028 030.00
Deeded Acreage: 0
Calculated Acreage: 0

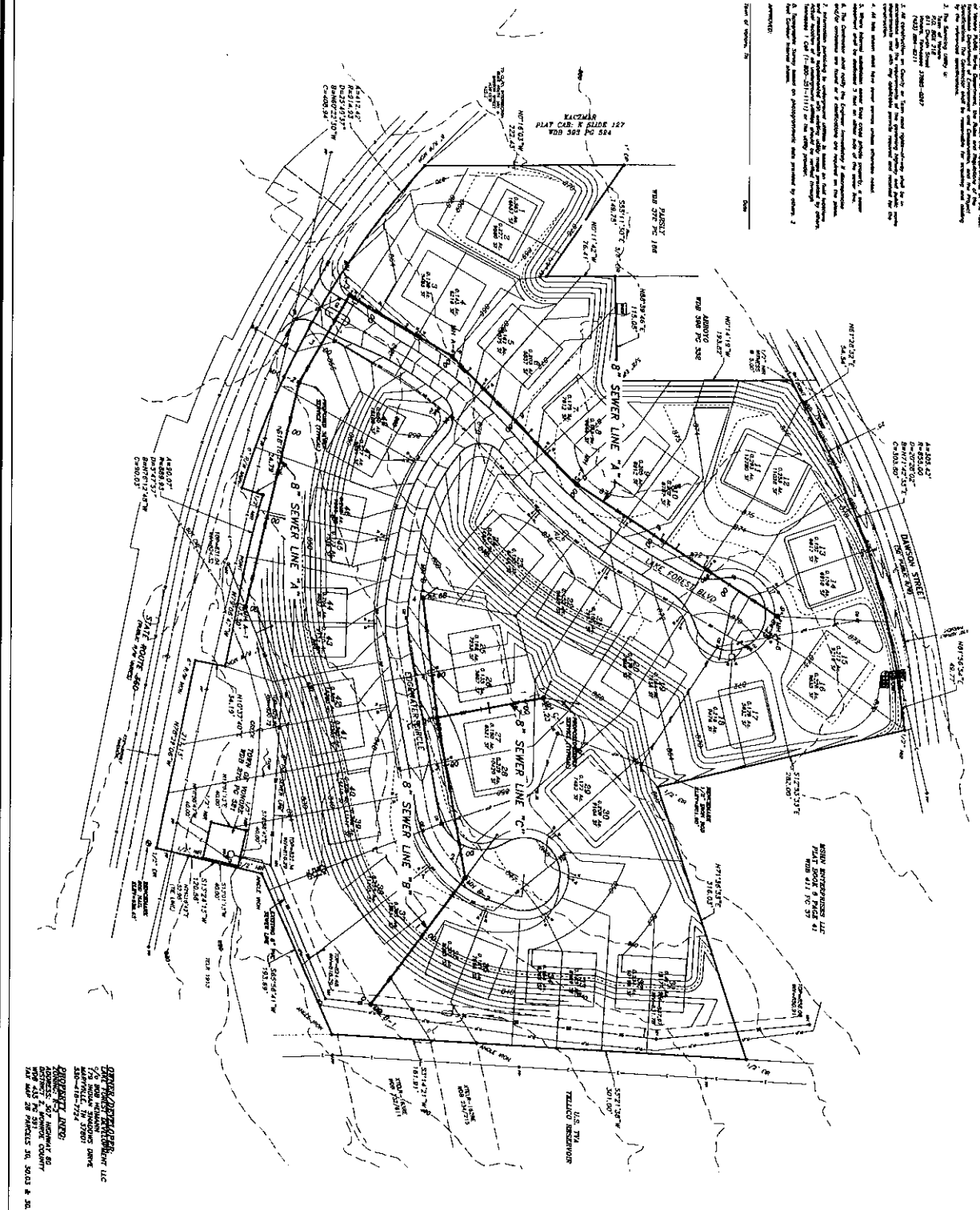


State of Tennessee, Comptroller of the Treasury, Office of Local Government (OLG), Esri Community Maps Contributors, State of North Carolina DOT, Tennessee STS GIS, © OpenStreetMap, Microsoft, Esri, HERE, Garmin, SafeGraph, GeoTechnologies, Inc, METI/NASA, USGS, EPA, NPS, US Census Bureau, USDA

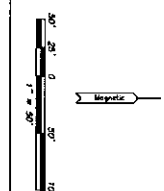
The property lines are compiled from information maintained by your local

GENERAL NOTES:

1. The Engineer is not responsible for the accuracy of the information shown on this plan.
2. The Engineer is not responsible for the accuracy of the information shown on this plan.
3. The Engineer is not responsible for the accuracy of the information shown on this plan.
4. The Engineer is not responsible for the accuracy of the information shown on this plan.
5. The Engineer is not responsible for the accuracy of the information shown on this plan.
6. The Engineer is not responsible for the accuracy of the information shown on this plan.
7. The Engineer is not responsible for the accuracy of the information shown on this plan.
8. The Engineer is not responsible for the accuracy of the information shown on this plan.
9. The Engineer is not responsible for the accuracy of the information shown on this plan.
10. The Engineer is not responsible for the accuracy of the information shown on this plan.



DESIGNED BY: [Name]
 DRAWN BY: [Name]
 CHECKED BY: [Name]
 DATE: 6/23/22
 SCALE: 1" = 50'



- LEGEND:**
- 8" SEWER LINE
 - 12" SEWER LINE
 - 18" SEWER LINE
 - 24" SEWER LINE
 - 30" SEWER LINE
 - 36" SEWER LINE
 - 42" SEWER LINE
 - 48" SEWER LINE
 - 54" SEWER LINE
 - 60" SEWER LINE
 - 66" SEWER LINE
 - 72" SEWER LINE
 - 78" SEWER LINE
 - 84" SEWER LINE
 - 90" SEWER LINE
 - 96" SEWER LINE
 - 102" SEWER LINE
 - 108" SEWER LINE
 - 114" SEWER LINE
 - 120" SEWER LINE
 - 126" SEWER LINE
 - 132" SEWER LINE
 - 138" SEWER LINE
 - 144" SEWER LINE
 - 150" SEWER LINE
 - 156" SEWER LINE
 - 162" SEWER LINE
 - 168" SEWER LINE
 - 174" SEWER LINE
 - 180" SEWER LINE
 - 186" SEWER LINE
 - 192" SEWER LINE
 - 198" SEWER LINE
 - 204" SEWER LINE
 - 210" SEWER LINE
 - 216" SEWER LINE
 - 222" SEWER LINE
 - 228" SEWER LINE
 - 234" SEWER LINE
 - 240" SEWER LINE
 - 246" SEWER LINE
 - 252" SEWER LINE
 - 258" SEWER LINE
 - 264" SEWER LINE
 - 270" SEWER LINE
 - 276" SEWER LINE
 - 282" SEWER LINE
 - 288" SEWER LINE
 - 294" SEWER LINE
 - 300" SEWER LINE



	STERLING CIVIL ENGINEERING LAND SURVEYING LAND PLANNING	1000 WEST HARRISON STREET MEMPHIS, TN 38103 (901) 527-1111 WWW.STERLING-ENGINEERING.COM
	OVERALL SEWER PLAN LAKE FOREST SUBDIVISION LAKE FOREST DEVELOPMENT, LLC VONORE, TN	
SHEET: CS.1 DATE: _____ BY: _____ REVISIONS: _____	TITLE: SEW7492 DRAWN: SDJ CHECKED: SDJ DATE: 6/23/22 SCALE: 1" = 50' SHEET: 7492-C8	

