

MEMORANDUM

To: Monroe County Regional Planning Commission
From: Laura Smith, Planner
Date: January 27, 2022
Subject: February 3, 2022, Monroe County Regional Planning Commission Agenda

AGENDA
MONROE COUNTY REGIONAL PLANNING COMMISSION
Boardroom of the J.P. Kennedy Building
Thursday, February 3, 2022
6:00 P.M.

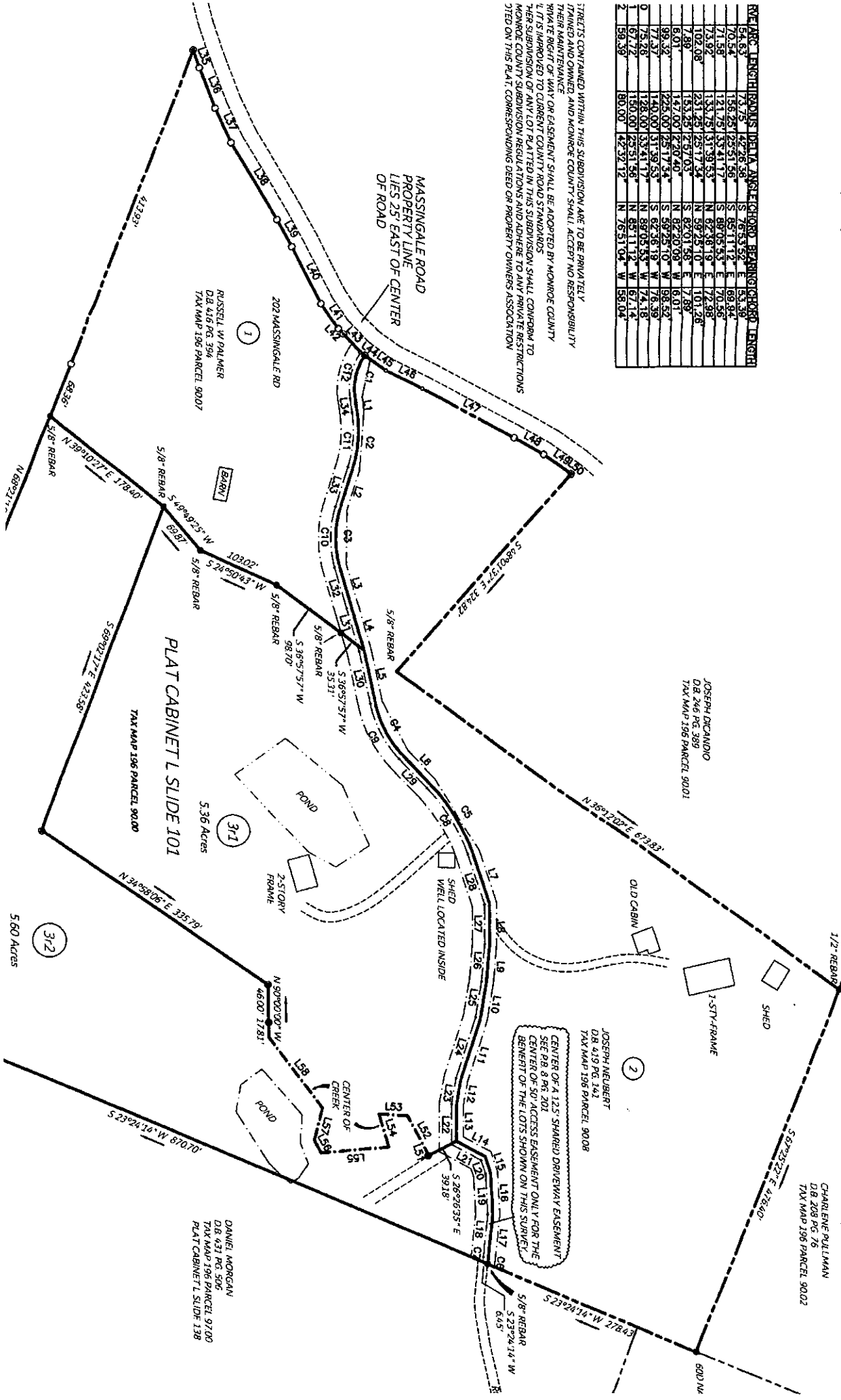
- I. Call to Order
- II. Approval of minutes from the previous meeting
- III. New Business
 - A. Additional lot on easement, Susan Neubert, Massingale Rd., Tax Map 196, Parcel 90, approximately 11.8 acres;
 - B. Report on minor subdivision plat review/approval
- IV. Other Business
- V. Adjournment

LOCATION MAP (M.T.S.)

THAT MAY EXIST WRITTEN OR UNWRITTEN

LINE	LENGTH	BEARING	POINT
1	184.53	S 78° 11' 13" E	80.80
2	184.53	S 78° 11' 13" E	80.80
3	184.53	S 78° 11' 13" E	80.80
4	184.53	S 78° 11' 13" E	80.80
5	184.53	S 78° 11' 13" E	80.80
6	184.53	S 78° 11' 13" E	80.80
7	184.53	S 78° 11' 13" E	80.80
8	184.53	S 78° 11' 13" E	80.80
9	184.53	S 78° 11' 13" E	80.80
10	184.53	S 78° 11' 13" E	80.80
11	184.53	S 78° 11' 13" E	80.80
12	184.53	S 78° 11' 13" E	80.80
13	184.53	S 78° 11' 13" E	80.80
14	184.53	S 78° 11' 13" E	80.80
15	184.53	S 78° 11' 13" E	80.80
16	184.53	S 78° 11' 13" E	80.80
17	184.53	S 78° 11' 13" E	80.80
18	184.53	S 78° 11' 13" E	80.80
19	184.53	S 78° 11' 13" E	80.80
20	184.53	S 78° 11' 13" E	80.80
21	184.53	S 78° 11' 13" E	80.80
22	184.53	S 78° 11' 13" E	80.80
23	184.53	S 78° 11' 13" E	80.80
24	184.53	S 78° 11' 13" E	80.80
25	184.53	S 78° 11' 13" E	80.80
26	184.53	S 78° 11' 13" E	80.80
27	184.53	S 78° 11' 13" E	80.80
28	184.53	S 78° 11' 13" E	80.80
29	184.53	S 78° 11' 13" E	80.80
30	184.53	S 78° 11' 13" E	80.80
31	184.53	S 78° 11' 13" E	80.80
32	184.53	S 78° 11' 13" E	80.80
33	184.53	S 78° 11' 13" E	80.80
34	184.53	S 78° 11' 13" E	80.80
35	184.53	S 78° 11' 13" E	80.80
36	184.53	S 78° 11' 13" E	80.80
37	184.53	S 78° 11' 13" E	80.80
38	184.53	S 78° 11' 13" E	80.80
39	184.53	S 78° 11' 13" E	80.80
40	184.53	S 78° 11' 13" E	80.80
41	184.53	S 78° 11' 13" E	80.80
42	184.53	S 78° 11' 13" E	80.80
43	184.53	S 78° 11' 13" E	80.80
44	184.53	S 78° 11' 13" E	80.80
45	184.53	S 78° 11' 13" E	80.80
46	184.53	S 78° 11' 13" E	80.80
47	184.53	S 78° 11' 13" E	80.80
48	184.53	S 78° 11' 13" E	80.80
49	184.53	S 78° 11' 13" E	80.80
50	184.53	S 78° 11' 13" E	80.80
51	184.53	S 78° 11' 13" E	80.80
52	184.53	S 78° 11' 13" E	80.80
53	184.53	S 78° 11' 13" E	80.80
54	184.53	S 78° 11' 13" E	80.80
55	184.53	S 78° 11' 13" E	80.80
56	184.53	S 78° 11' 13" E	80.80
57	184.53	S 78° 11' 13" E	80.80
58	184.53	S 78° 11' 13" E	80.80
59	184.53	S 78° 11' 13" E	80.80
60	184.53	S 78° 11' 13" E	80.80
61	184.53	S 78° 11' 13" E	80.80
62	184.53	S 78° 11' 13" E	80.80
63	184.53	S 78° 11' 13" E	80.80
64	184.53	S 78° 11' 13" E	80.80
65	184.53	S 78° 11' 13" E	80.80
66	184.53	S 78° 11' 13" E	80.80
67	184.53	S 78° 11' 13" E	80.80
68	184.53	S 78° 11' 13" E	80.80
69	184.53	S 78° 11' 13" E	80.80
70	184.53	S 78° 11' 13" E	80.80
71	184.53	S 78° 11' 13" E	80.80
72	184.53	S 78° 11' 13" E	80.80
73	184.53	S 78° 11' 13" E	80.80
74	184.53	S 78° 11' 13" E	80.80
75	184.53	S 78° 11' 13" E	80.80
76	184.53	S 78° 11' 13" E	80.80
77	184.53	S 78° 11' 13" E	80.80
78	184.53	S 78° 11' 13" E	80.80
79	184.53	S 78° 11' 13" E	80.80
80	184.53	S 78° 11' 13" E	80.80
81	184.53	S 78° 11' 13" E	80.80
82	184.53	S 78° 11' 13" E	80.80
83	184.53	S 78° 11' 13" E	80.80
84	184.53	S 78° 11' 13" E	80.80
85	184.53	S 78° 11' 13" E	80.80
86	184.53	S 78° 11' 13" E	80.80
87	184.53	S 78° 11' 13" E	80.80
88	184.53	S 78° 11' 13" E	80.80
89	184.53	S 78° 11' 13" E	80.80
90	184.53	S 78° 11' 13" E	80.80
91	184.53	S 78° 11' 13" E	80.80
92	184.53	S 78° 11' 13" E	80.80
93	184.53	S 78° 11' 13" E	80.80
94	184.53	S 78° 11' 13" E	80.80
95	184.53	S 78° 11' 13" E	80.80
96	184.53	S 78° 11' 13" E	80.80
97	184.53	S 78° 11' 13" E	80.80
98	184.53	S 78° 11' 13" E	80.80
99	184.53	S 78° 11' 13" E	80.80
100	184.53	S 78° 11' 13" E	80.80

STREETS CONTAINED WITHIN THIS SUBDIVISION ARE TO BE PRIVATELY OWNED AND MAINTAINED BY MONROE COUNTY. ACCEPT NO RESPONSIBILITY FOR THE MAINTENANCE OF ANY OR EASEMENT SHALL BE ADOPTED BY MONROE COUNTY. IT IS IMPROVED TO CURRENT COUNTY ROAD STANDARDS. THE SUBDIVISION OF ANY LOT PLATTED IN THIS SUBDIVISION SHALL CONFORM TO MONROE COUNTY SUBDIVISION REGULATIONS AND ADHERE TO ANY PRIVATE RESTRICTIONS STATED ON THIS PLAT CORRESPONDING DEED OR PROPERTY OWNERS ASSOCIATION



11/10/05
ONE