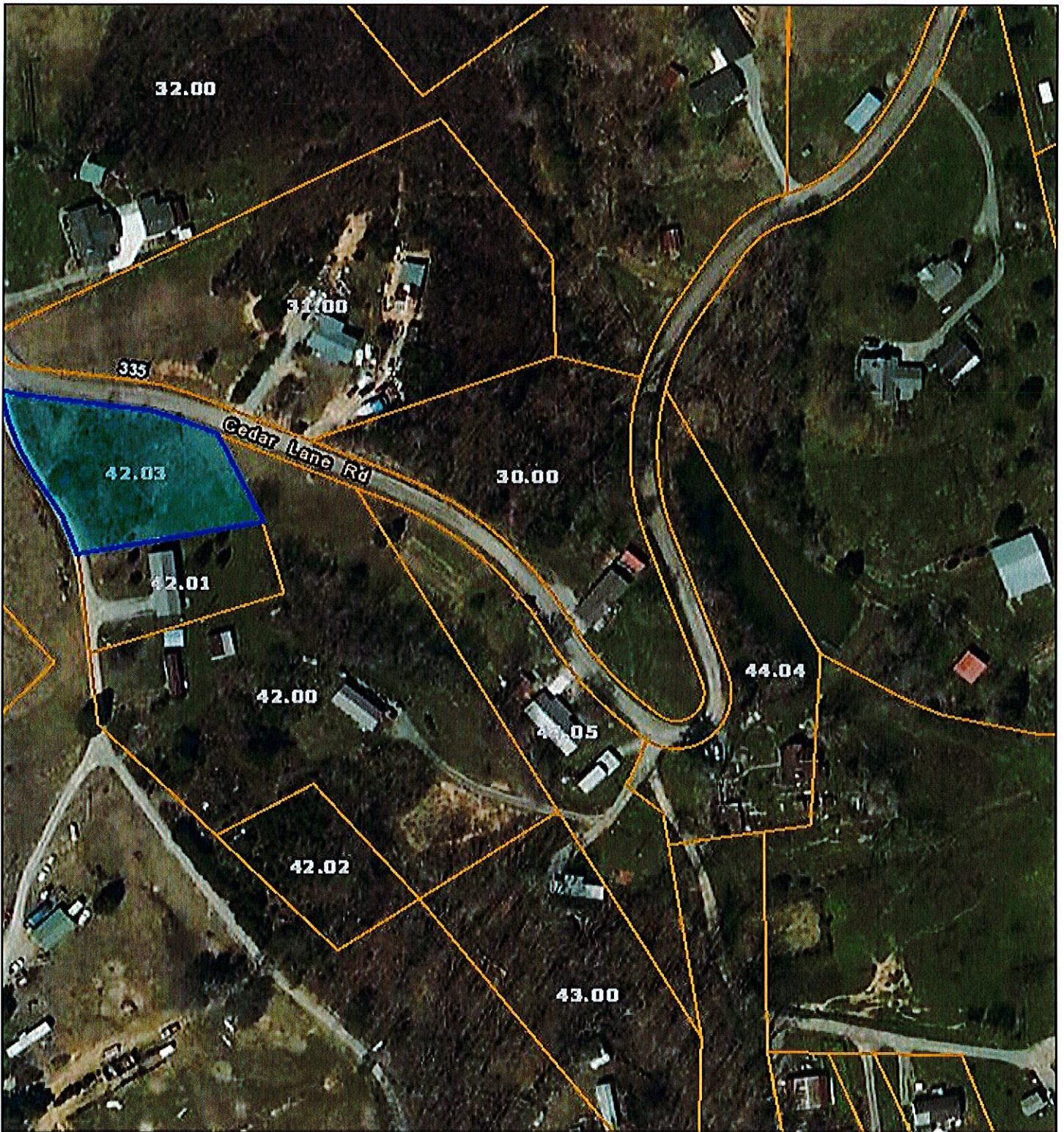


MEMORANDUM

To: Madisonville Regional Planning Commission
From: Laura Smith, Planner
Date: January 11, 2021
Subject: January 19, 2021 Madisonville Regional Planning Commission Agenda

AGENDA
MADISONVILLE REGIONAL PLANNING COMMISSION
Madisonville City Hall
Board Room
Tuesday, January 19, 2021
Immediately following the BZA

- I. Call to Order
- II. Approval of minutes from the meeting of December 15, 2020 meeting.
- III. Planned Agenda Items
 - A. Subdivision plat with private easement, Property owners, Dennis and Geneva Lunsford, Tax Map 103, Parcel 42.00 and 42.03, Cedar Lane Rd., Madisonville Planning Region;
 - B. Request to name private streets on former Hiwassee College campus, Property owners, Church Communities International (Church Stewardship Inc.), Applicant, John Burleson, Tax Map 45, Parcel 015.00, Madisonville Planning Region;
 - C. Review and discussion, Madisonville Zoning Ordinance, Section 11-408. Signs, Billboards and Other Advertising Structures;
- IV. Update from Planning Dept.
- V. Other Business
- VI. Adjournment



Date: January 13, 2021
County: Monroe
Owner: LUNSFORD DENNIS LEE
Address: CEDAR LANE RD
Parcel Number: 103 042.03
Deeded Acreage: 0
Calculated Acreage: 0
Date of Imagery: 2019

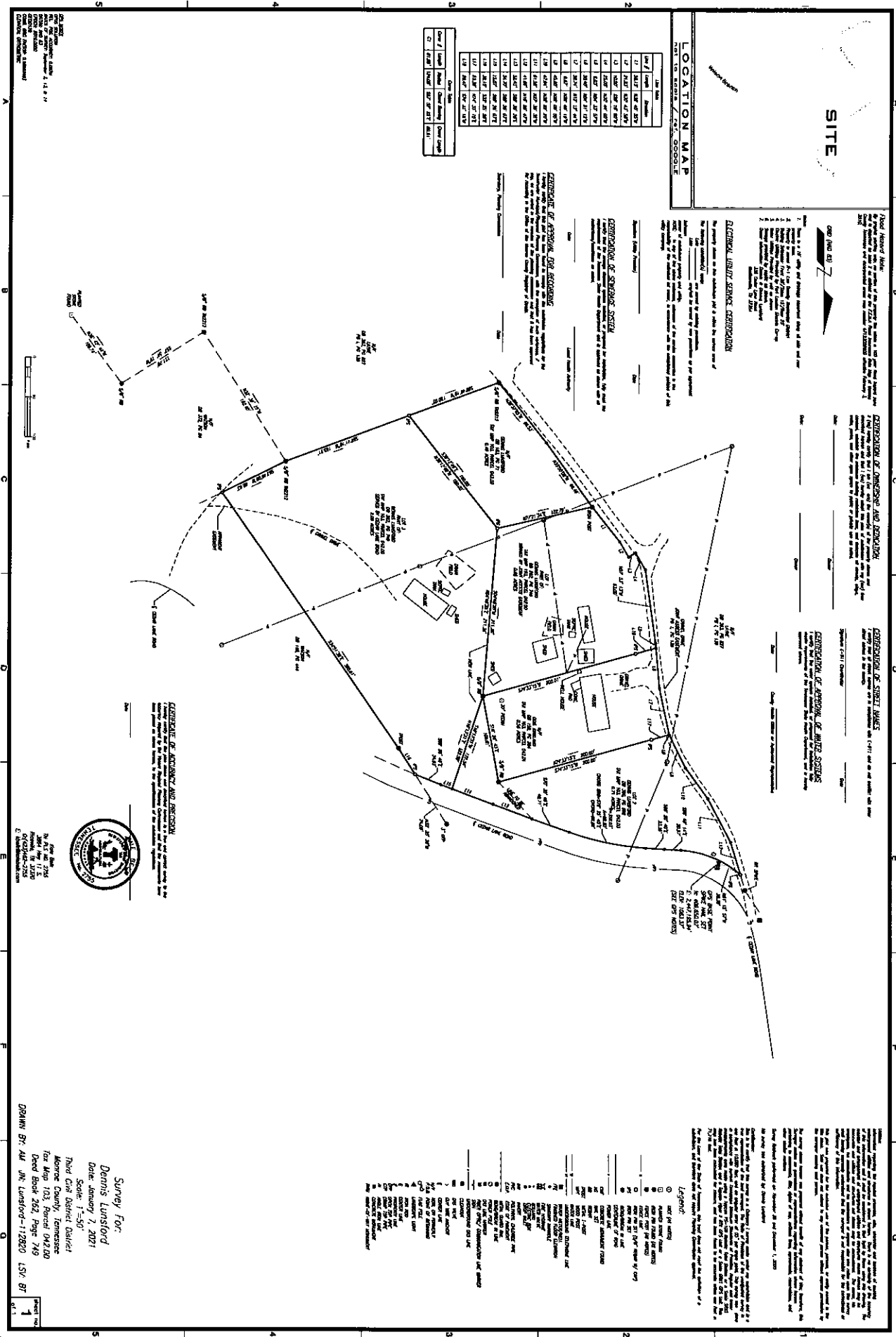
Esri, HERE, Garmin, (c) OpenStreetMap contributors
TN Comptroller - OLG
TDOT
State of Tennessee, Comptroller of the Treasury, Office of Local Government
(OLG)

The property lines are compiled from information maintained by your local county Assessor's office but are not conclusive evidence of property ownership in any court of law.

SITE

LOCATION MAP
TOWN OF DENNIS, TENNESSEE

Lot #	Area (Acres)	Owner
1	0.12	...
2	0.15	...
3	0.18	...
4	0.21	...
5	0.24	...
6	0.27	...
7	0.30	...
8	0.33	...
9	0.36	...
10	0.39	...
11	0.42	...
12	0.45	...
13	0.48	...
14	0.51	...
15	0.54	...
16	0.57	...
17	0.60	...
18	0.63	...
19	0.66	...
20	0.69	...
21	0.72	...
22	0.75	...
23	0.78	...
24	0.81	...
25	0.84	...
26	0.87	...
27	0.90	...
28	0.93	...
29	0.96	...
30	0.99	...
31	1.02	...
32	1.05	...
33	1.08	...
34	1.11	...
35	1.14	...
36	1.17	...
37	1.20	...
38	1.23	...
39	1.26	...
40	1.29	...
41	1.32	...
42	1.35	...
43	1.38	...
44	1.41	...
45	1.44	...
46	1.47	...
47	1.50	...
48	1.53	...
49	1.56	...
50	1.59	...
51	1.62	...
52	1.65	...
53	1.68	...
54	1.71	...
55	1.74	...
56	1.77	...
57	1.80	...
58	1.83	...
59	1.86	...
60	1.89	...
61	1.92	...
62	1.95	...
63	1.98	...
64	2.01	...
65	2.04	...
66	2.07	...
67	2.10	...
68	2.13	...
69	2.16	...
70	2.19	...
71	2.22	...
72	2.25	...
73	2.28	...
74	2.31	...
75	2.34	...
76	2.37	...
77	2.40	...
78	2.43	...
79	2.46	...
80	2.49	...
81	2.52	...
82	2.55	...
83	2.58	...
84	2.61	...
85	2.64	...
86	2.67	...
87	2.70	...
88	2.73	...
89	2.76	...
90	2.79	...
91	2.82	...
92	2.85	...
93	2.88	...
94	2.91	...
95	2.94	...
96	2.97	...
97	3.00	...
98	3.03	...
99	3.06	...
100	3.09	...



GENERAL NOTES:
 1. This plan is a true and correct copy of the original plan on file in the office of the Surveyor General of the State of Tennessee.
 2. The original plan is on file in the office of the Surveyor General of the State of Tennessee.
 3. The original plan is on file in the office of the Surveyor General of the State of Tennessee.
 4. The original plan is on file in the office of the Surveyor General of the State of Tennessee.
 5. The original plan is on file in the office of the Surveyor General of the State of Tennessee.

ELECTRICAL SERVICE CONNECTION:
 The location of the electrical service connection is shown on this plan. The electrical service connection is to be made at the location shown on this plan. The electrical service connection is to be made at the location shown on this plan. The electrical service connection is to be made at the location shown on this plan. The electrical service connection is to be made at the location shown on this plan.

GENERAL NOTES:
 1. This plan is a true and correct copy of the original plan on file in the office of the Surveyor General of the State of Tennessee.
 2. The original plan is on file in the office of the Surveyor General of the State of Tennessee.
 3. The original plan is on file in the office of the Surveyor General of the State of Tennessee.
 4. The original plan is on file in the office of the Surveyor General of the State of Tennessee.
 5. The original plan is on file in the office of the Surveyor General of the State of Tennessee.

GENERAL NOTES:
 1. This plan is a true and correct copy of the original plan on file in the office of the Surveyor General of the State of Tennessee.
 2. The original plan is on file in the office of the Surveyor General of the State of Tennessee.
 3. The original plan is on file in the office of the Surveyor General of the State of Tennessee.
 4. The original plan is on file in the office of the Surveyor General of the State of Tennessee.
 5. The original plan is on file in the office of the Surveyor General of the State of Tennessee.

GENERAL NOTES:
 1. This plan is a true and correct copy of the original plan on file in the office of the Surveyor General of the State of Tennessee.
 2. The original plan is on file in the office of the Surveyor General of the State of Tennessee.
 3. The original plan is on file in the office of the Surveyor General of the State of Tennessee.
 4. The original plan is on file in the office of the Surveyor General of the State of Tennessee.
 5. The original plan is on file in the office of the Surveyor General of the State of Tennessee.

GENERAL NOTES:
 1. This plan is a true and correct copy of the original plan on file in the office of the Surveyor General of the State of Tennessee.
 2. The original plan is on file in the office of the Surveyor General of the State of Tennessee.
 3. The original plan is on file in the office of the Surveyor General of the State of Tennessee.
 4. The original plan is on file in the office of the Surveyor General of the State of Tennessee.
 5. The original plan is on file in the office of the Surveyor General of the State of Tennessee.

GENERAL NOTES:
 1. This plan is a true and correct copy of the original plan on file in the office of the Surveyor General of the State of Tennessee.
 2. The original plan is on file in the office of the Surveyor General of the State of Tennessee.
 3. The original plan is on file in the office of the Surveyor General of the State of Tennessee.
 4. The original plan is on file in the office of the Surveyor General of the State of Tennessee.
 5. The original plan is on file in the office of the Surveyor General of the State of Tennessee.

GENERAL NOTES:
 1. This plan is a true and correct copy of the original plan on file in the office of the Surveyor General of the State of Tennessee.
 2. The original plan is on file in the office of the Surveyor General of the State of Tennessee.
 3. The original plan is on file in the office of the Surveyor General of the State of Tennessee.
 4. The original plan is on file in the office of the Surveyor General of the State of Tennessee.
 5. The original plan is on file in the office of the Surveyor General of the State of Tennessee.

GENERAL NOTES:
 1. This plan is a true and correct copy of the original plan on file in the office of the Surveyor General of the State of Tennessee.
 2. The original plan is on file in the office of the Surveyor General of the State of Tennessee.
 3. The original plan is on file in the office of the Surveyor General of the State of Tennessee.
 4. The original plan is on file in the office of the Surveyor General of the State of Tennessee.
 5. The original plan is on file in the office of the Surveyor General of the State of Tennessee.

GENERAL NOTES:
 1. This plan is a true and correct copy of the original plan on file in the office of the Surveyor General of the State of Tennessee.
 2. The original plan is on file in the office of the Surveyor General of the State of Tennessee.
 3. The original plan is on file in the office of the Surveyor General of the State of Tennessee.
 4. The original plan is on file in the office of the Surveyor General of the State of Tennessee.
 5. The original plan is on file in the office of the Surveyor General of the State of Tennessee.

GENERAL NOTES:
 1. This plan is a true and correct copy of the original plan on file in the office of the Surveyor General of the State of Tennessee.
 2. The original plan is on file in the office of the Surveyor General of the State of Tennessee.
 3. The original plan is on file in the office of the Surveyor General of the State of Tennessee.
 4. The original plan is on file in the office of the Surveyor General of the State of Tennessee.
 5. The original plan is on file in the office of the Surveyor General of the State of Tennessee.

GENERAL NOTES:
 1. This plan is a true and correct copy of the original plan on file in the office of the Surveyor General of the State of Tennessee.
 2. The original plan is on file in the office of the Surveyor General of the State of Tennessee.
 3. The original plan is on file in the office of the Surveyor General of the State of Tennessee.
 4. The original plan is on file in the office of the Surveyor General of the State of Tennessee.
 5. The original plan is on file in the office of the Surveyor General of the State of Tennessee.

GENERAL NOTES:
 1. This plan is a true and correct copy of the original plan on file in the office of the Surveyor General of the State of Tennessee.
 2. The original plan is on file in the office of the Surveyor General of the State of Tennessee.
 3. The original plan is on file in the office of the Surveyor General of the State of Tennessee.
 4. The original plan is on file in the office of the Surveyor General of the State of Tennessee.
 5. The original plan is on file in the office of the Surveyor General of the State of Tennessee.

GENERAL NOTES:
 1. This plan is a true and correct copy of the original plan on file in the office of the Surveyor General of the State of Tennessee.
 2. The original plan is on file in the office of the Surveyor General of the State of Tennessee.
 3. The original plan is on file in the office of the Surveyor General of the State of Tennessee.
 4. The original plan is on file in the office of the Surveyor General of the State of Tennessee.
 5. The original plan is on file in the office of the Surveyor General of the State of Tennessee.

GENERAL NOTES:
 1. This plan is a true and correct copy of the original plan on file in the office of the Surveyor General of the State of Tennessee.
 2. The original plan is on file in the office of the Surveyor General of the State of Tennessee.
 3. The original plan is on file in the office of the Surveyor General of the State of Tennessee.
 4. The original plan is on file in the office of the Surveyor General of the State of Tennessee.
 5. The original plan is on file in the office of the Surveyor General of the State of Tennessee.

GENERAL NOTES:
 1. This plan is a true and correct copy of the original plan on file in the office of the Surveyor General of the State of Tennessee.
 2. The original plan is on file in the office of the Surveyor General of the State of Tennessee.
 3. The original plan is on file in the office of the Surveyor General of the State of Tennessee.
 4. The original plan is on file in the office of the Surveyor General of the State of Tennessee.
 5. The original plan is on file in the office of the Surveyor General of the State of Tennessee.

Survey for
 Dennis Lunstford
 Date: January 2, 2021
 Scale: 1"=50'
 Third Civil District District
 Monroe County, Tennessee
 For Map 103, Parcel 042200
 Deed Book 262, Page 749
 D949W, B7, All, J.R. Lunstford-112820, LSV, B7



Survey for
 Dennis Lunstford
 Date: January 2, 2021
 Scale: 1"=50'
 Third Civil District District
 Monroe County, Tennessee
 For Map 103, Parcel 042200
 Deed Book 262, Page 749
 D949W, B7, All, J.R. Lunstford-112820, LSV, B7



Date: January 13, 2021
County: Monroe
Owner: CHURCH STEWARDSHIP INC
Address: HIWASSEE RD
Parcel Number: 045 015.00
Deeded Acreage: 284.45
Calculated Acreage: 0
Date of Imagery: 2019

Esri, HERE, Garmin, (c) OpenStreetMap contributors
TN Comptroller - OLG
TDOT
State of Tennessee, Comptroller of the Treasury, Office of Local Government (OLG)

The property lines are compiled from information maintained by your local county Assessor's office but are not conclusive evidence of property ownership in any court of law.

Church Communities International

225 Hiwassee College Drive • Madisonville, TN 37354
tel: 423.545.8088 • fax: 845.658.3144

1-6-2021

To whom it may concern,

On behalf of Church Communities International, I, John Bureson, submit the following proposed private road name and number changes on the campus formerly known as Hiwassee College and recently purchased by Church Communities Int. The purpose for the proposed changes would be several. Firstly, to disassociate our organization with the former college and remove ongoing confusion with mail/ deliveries and ongoing association as a college which we are not. Secondly, to provide accurate street address locations for key points and buildings on the campus in regards to both potential emergency response and/or deliveries or activities that need to be better identified. The proposed road name changes would be as follows:

- 1) Currently named "Hiwassee College Blvd" would be re-named "Hiwassee Community Drive"
- 2) Currently named "Hiwassee College Drive" would be renamed "Creek Corner Drive"
- 3) Currently named "College Access Rd" would be renamed "Community Access Road"

The proposed numbering scheme for the roads named above would be as follows and can be referred to on the attached aerial survey map with changes shown:

- 1) Hiwassee Community Drive:
 - a. Former Alumni Center entrance -100 Hiwassee Community Drive (this will also serve as the new corporate address location for this Church Communities Int campus as follows:

"100 Hiwassee Community Dr./ PO Box 367
Madisonville, TN 37354
USA"
 - b. Former Brock Hall entrance – 105 Hiwassee Community Drive
 - c. Former Rymer Student Center entrance – 107 Hiwassee Community Drive
 - d. Former Barker Learning Center entrance – 115 Hiwassee Community Drive
 - e. Former Allison Hall entrance – 121 Hiwassee Community Drive
 - f. Former Buckner Memorial Chapel entrance/ parking lot – 125 Hiwassee Community Drive
- 2) Creek Corner Road:
 - a. Rudy Youell Gymnasium entrance – 50 Creek Corner Rd.
 - b. Former Library building – 70 Creek Corner Rd.
- 3) One additional road number proposal would be to the access to former Tom Black Hall on Brunner Rd which is a public road. Propose assigning it "160 Brunner Rd" which seems to match existing numbering scheme for nearest neighboring houses.

Church Communities International

225 Hiwassee College Drive • Madisonville, TN 37354
tel: 423.545.8088 • fax: 845.658.3144

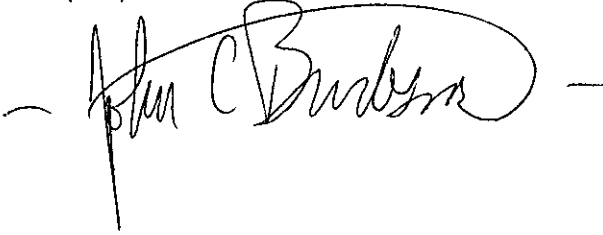
Thank you for considering these changes and additions. Please don't hesitate to contact me with any questions or counter-suggestions.

Respectfully,

John Burleson

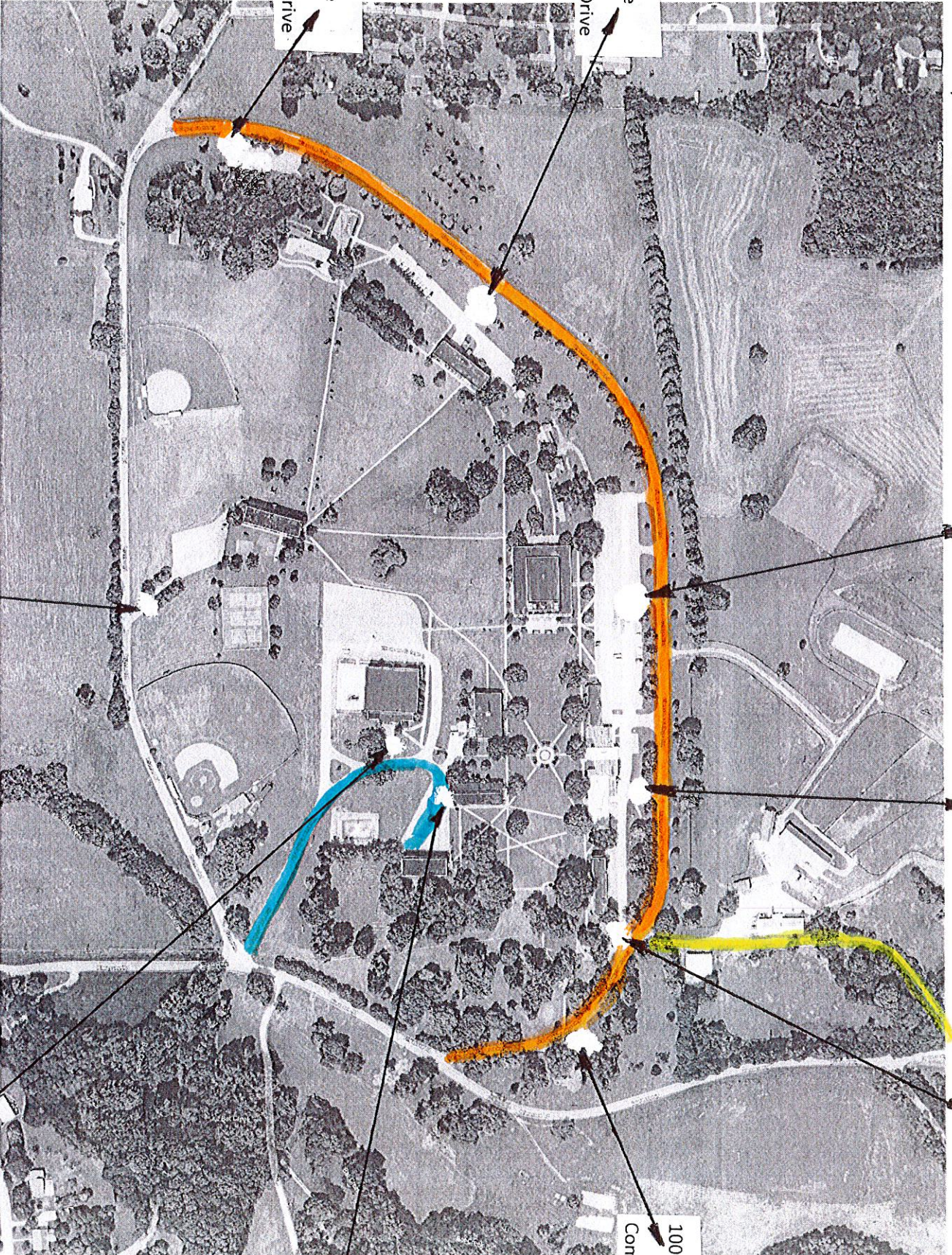
email: johnburleson@ccimail.com

Cell: (845) 594-2521

A handwritten signature in black ink, appearing to read "John C. Burleson". The signature is written in a cursive style with a large, sweeping loop over the "B". It is flanked by short horizontal lines on both sides.

ITEM B

- Hiwassee Community Drive
- Creek Corner Drive
- Community Access Road



121 Hiwassee
Community Drive

125 Hiwassee
Community Drive

115 Hiwassee
Community Drive

107 Hiwassee
Community Drive

105 Hiwassee
Community Drive

100 Hiwassee
Community Drive

70 Creek
Corner Rd

160 Brunner Rd

50 Creek Corner Rd